



Prada

Role Reversal

Crimson takes up residence in unfamiliar ocular territory.

Scarlet is swapping locations, with ruddy lids pairing brilliantly with nude lips. While taking the red eye is becoming more accepted in the world of beauty, be forewarned: The trend takes plenty of aplomb. "It makes a statement," asserts celebrity artist Taylor Babaian, creator of Kre•at Beauty. "It says, 'She's edgy, creative and loves to push boundaries.'" Not just any rubicund will do, however. "Colors with warmer red undertones, such as brick or reddish copper, are more wearable," notes Babaian, adding, "These warm red shades complement blue and green, therefore they make eye color pop. Throw in some black eyeliner along the upper lash line, and her eyes become piercing." Crimson feeling too bold? Temper the intensity of red by adding dark brown shadow to the mix. —Karie L. Frost

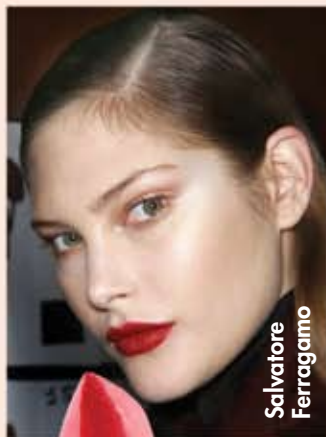


Make-up designory Eyeshadow in Cajun Spice
Mehron Precious Gems in Garnet
Von Natur Eye Colour in Tiger Eye
Mirabella Beauty Refract Sol

Colorlab Custom Cosmetics Lip Gloss in Butter Cream
Your Name Professional Brands Micro Bubble Lipstick in Undressed
Repêchage Conditioning Lip Gloss in Aura
Your Name Professional Brands Super Gloss in Super Nude
Mineral Mine Lipliner in Sandstone

Take to Red Lips

Of course, the proverbial red lip also swept through the show season with a vengeance, and its best incarnations—whether baring slightly blue or bright orange undertones—were paired with a nearly naked eye.



Salvatore Ferragamo



Lanvin



Sportmax

Sormé Cosmetics Lipstick in Glamour Red



Youngblood Mineral Cosmetics Lip Liner Pencil in Truly Red



Make-up designory Satin Lipstick in Lady Bug

